



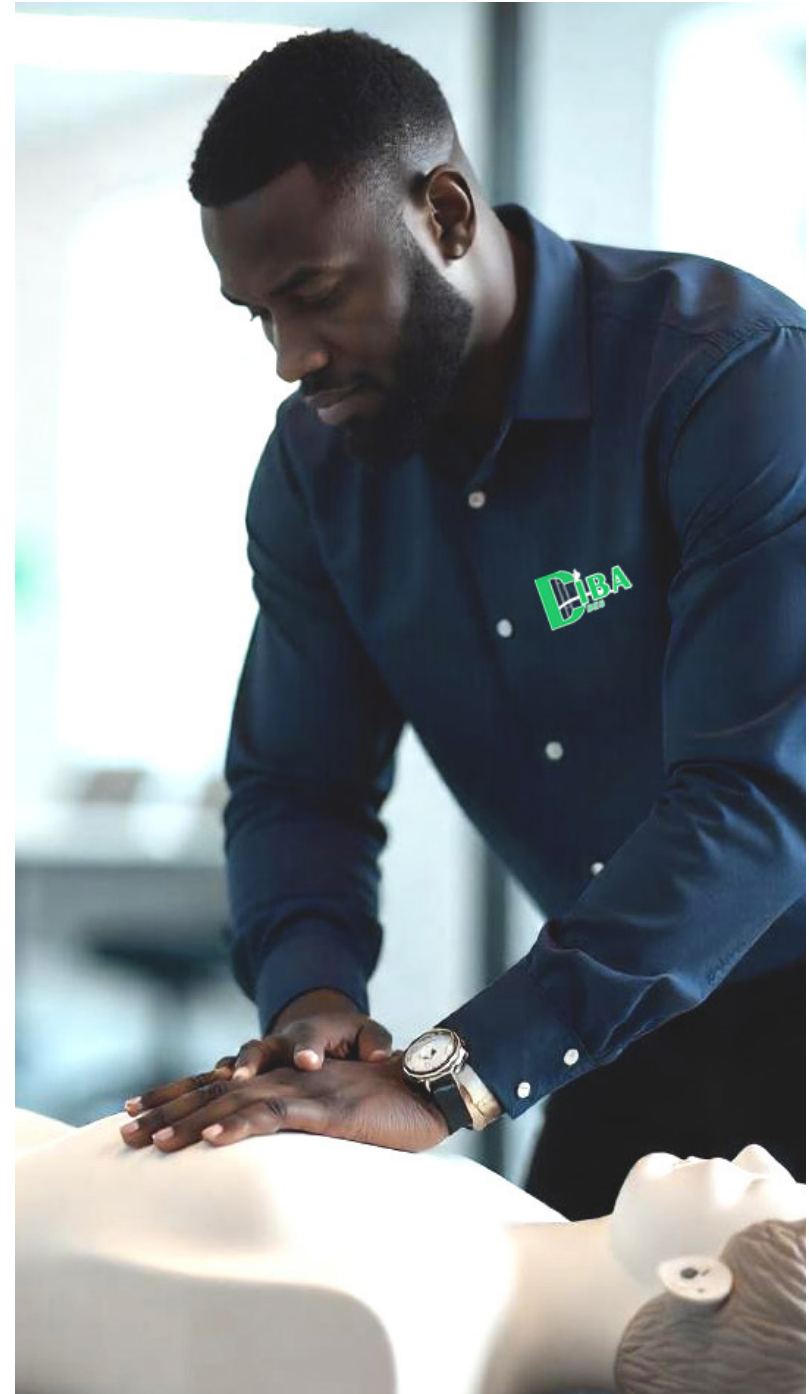
PRICE LIST: ACCREDITED OHS TRAINING COURSES 2026

# ABOUT



## Welcome to Diba BES

DIBA BES is a leading provider of Occupational Health and Safety (OHS) training, accredited by SACPCMP, SAQA and HWSETA. We offer nationally recognised qualifications as well as customised short courses, designed to meet current industry requirements and practical workplace needs. Our experienced trainers use modern, interactive methods to ensure engaging and effective learning. DIBA BES is committed to raising safety standards and building competent, confident OHS practitioners across South Africa.



# ACCREDITATIONS



HWSETA stands for the Health and Welfare Sector Education and Training Authority. It is a statutory body established in terms of the Skills Development Act of 1998 with the mandate to ensure that the health and social development sectors have adequate and appropriately skilled workforce to provide quality services to



The South African Qualifications Authority (SAQA) is the oversight body of the NQF and the custodian of its values and quality character.



Continuing Professional Development (CPD) encompasses formal, non-formal, and informal learning to enhance knowledge, skills, and competencies for personal and professional growth, employability, and societal contribution.

# ACCREDITED TRAINING COURSES

## ACCREDITED TRAINING COURSES

- First Aid Level 1
- First Aid Level 2
- First Aid Level 3
- First Aid Level 1-3
- Safety, Health and Environment (SHE) Representatives
- Basic Fire Fighting Level 1
- Introduction to OHS Act, 1993 (As amended)
- Accident and Incident Investigation
- Emergency Evacuation Procedures
- Apply Health and Safety to a Work Area
- Risk Assessment
- Hazard Identification and Risk Assessment (HIRA)
- Basic Working at Heights
- Excavation Management
- Work in Confined Spaces (Construction sites only)

## CPD ACCREDITED COURSES

- Accident and Incident Investigation
- Fire Fighting
- Hazard Identification & Risk Assessment (HIRA)
- Introduction to OHS Act No. 85 of 1993 (Legal Liability)
- Skills Programme - First Aid Level 1

# ACCREDITED TRAINING COURSES

Training Tittle	Outline	Target Audience	Duration	Price (Ex VAT)
First Aid Level 1	<ul style="list-style-type: none"> <li>• First aid legislative requirements</li> <li>• Workplace hazards identification</li> <li>• Understanding and providing cardio-pulmonary resuscitation (CPR)</li> <li>• Understanding potential hazards in the work enviroment</li> <li>• Understanding types of injuries</li> <li>• Understanding the different equipment and the use thereof</li> </ul>	Emergency Preparedness Personnel	2 days	Classroom R 1 160
First Aid Level 2	<ul style="list-style-type: none"> <li>• Demonstrate the principles of primary emergency care</li> <li>• Control injury emergency scene in the workplace</li> <li>• Primary emergency life support for adults, children and infants</li> <li>• Explain and manage shock</li> <li>• Carry out secondary assessment of the sick or injured person and pro-vide appropriate primary emergen-cy care at the scene</li> <li>• Accidents /Incidents records</li> </ul>	All Employees	2 days	Classroom R 1390
First Aid Level 3	<ul style="list-style-type: none"> <li>• Introduction and the principles of advanced first aid</li> <li>• Terminology, positioning, anatomy and physiology and referenced to illness and injury</li> <li>• Advanced workplace preparedness, safety, scene, patient assessment, and treatment protocol management</li> <li>• First aid treatment procedures for life-threatening and common injuries</li> <li>• Child birth procedures</li> <li>• CPR and choking for adults, chil-dren, and infants</li> <li>• Bleeding, wounds, and burns, head, spinal, chest, abdominal, pelvic, and fractures injuries</li> <li>• Environmental emergencies, drowning, bites, and stings, and poisoning</li> <li>• Other medical emergencies</li> </ul>	All Employees	4 days	Classroom R 2140



# ACCREDITED TRAINING COURSES

Training Tittle	Outline	Target Audience	Duration	Price (Ex VAT)
First Aid Level 1- 3	<ul style="list-style-type: none"> <li>• First aid legislative requirements</li> <li>• Workplace hazards identification</li> <li>• Learning the anatomy of the body</li> <li>• Understanding and providing car-dio-pulmonary resuscitation (CPR)</li> <li>• Understanding potential hazards in the work environment</li> <li>• Understanding types of injuries</li> <li>• Understanding different equipment and use thereof</li> <li>• Safe application first aid treatment</li> <li>• Assisting in childbirth</li> </ul>	All Employees	5 days	Classroom R 3100
Safety, Health and Environment (SHE) Representative	<ul style="list-style-type: none"> <li>• Election and nomination process</li> <li>• Purpose, structure and responsibilities of an HSE committee</li> <li>• Participate effectively in HSE committee procedures</li> <li>• Common causes of incidents in the workplace</li> <li>• Basic principles of incident prevention</li> <li>• Carry out a basic inspection of their work area</li> </ul>	All Employees Supervisors	1 days	Classroom R 935  Online R 880
Basic Fire Fighting Level 1	<ul style="list-style-type: none"> <li>• Legislative requirements</li> <li>• Stakeholders</li> <li>• Duties of a firefighter</li> <li>• Firefighting and control equipment</li> <li>• Fire terminology</li> <li>• Fire prevention</li> </ul>	All Employees	2 days	Classroom R 990
Introduction to OHS Act, 1993 (As amended)	<ul style="list-style-type: none"> <li>• Legislative requirements</li> <li>• Duties of employer and employees</li> <li>• SHE representatives and SHE committees.</li> <li>• The role of the Department of Labour (DoL)</li> </ul>	All Employees SHE representatives Supervisors	1 day	Classroom R 1450  Online R 1380

# ACCREDITED TRAINING COURSES

Training Title	Outline	Target Audience	Duration	Price (Ex VAT)
Accident and Incident Investigation	<ul style="list-style-type: none"> <li>Causes of incidents in the workplace</li> <li>Preliminary investigation and</li> <li>Reporting incidents</li> <li>Recommendation and corrective planning</li> </ul>	Middle management Supervisors Safety Officers Safety Managers	1 days	Classroom R 800  Online R 680
Emergency Evacuation Procedures	<ul style="list-style-type: none"> <li>Evacuation legislative requirement</li> <li>Evacuation terminology</li> <li>Emergency procedures and techniques</li> <li>Emergency assembly points</li> <li>Emergency team</li> </ul>	All Employees responsible for emergency planning and implementation	1 days	Classroom R 935  Online R 880
Apply Health and Safety to a Work Area	<ul style="list-style-type: none"> <li>Potential hazards are correctly identified, reported, removed or reduced</li> <li>Implications of exposure to hazardous substances and hazards are known</li> <li>A health and safety plan is drawn up</li> <li>Protective clothing requirements are identified and protective clothing is used</li> </ul>	SHE Representatives Supervisors	1 days	Classroom R 720  Online R 684
Hazard Identification and Risk Assessment (HIRA)	<ul style="list-style-type: none"> <li>Explain the legal and specified requirements for conducting continuous risk assessments</li> <li>The continuous risk assessment process is explained</li> <li>The relevant hazards and risks likely to be encountered during a specific continuous risk assessment are named</li> <li>Various physical and environmental conditions which could exist are evaluated</li> <li>Remedial action for hazards is implemented accordingly</li> <li>The consequences of non-compliance to the procedures for initiating remedial action and follow-up on continuous risk assessment are explained.</li> </ul>	General managers Middle management Supervisors Safety Officers Safety Managers	1 day	Classroom R 935  Online R 880

# ACCREDITED TRAINING COURSES

Training Tittle	Outline	Target Audience	Duration	Price (Ex VAT)
Planned Task Observation	<ul style="list-style-type: none"> <li>• Demonstrate knowledge of how to prepare for planned tasks observation at a working place</li> <li>• Conduct planned tasks observation</li> <li>• Record and follow-up</li> </ul>	Supervisors Safety Officers Safety Managers	1 days	Classroom R 450  Online R 380
Basic Working At Heights	<ul style="list-style-type: none"> <li>• Describe the requirements to safely perform work in elevated positions</li> <li>• Describe the requirements to correctly inspect, care for and store fall arrest equipment</li> <li>• Describe the safety, health and environmental principles with regards to working platforms, ladders, scaffolds and walkways in elevated positions</li> </ul>	All Employees	1 days	Classroom R 850
Excavation Management	<ul style="list-style-type: none"> <li>• Explain the legal responsibilities for health and safety when working in or alongside excavations</li> <li>• Identify unsafe working conditions relating to excavations</li> <li>• Determine methods of achieving health and safety when working in or alongside excavations</li> <li>• Undertake responsibility for safety of self and others</li> <li>• Conduct safe work practices or procedures</li> </ul>	Supervisors Safety Officers SHE Representative	1 days	Classroom R 600  Online R 540
Work in Confined Spaces (Construction sites only)	<ul style="list-style-type: none"> <li>• Identify the hazards of working in confined spaces</li> <li>• Identify appropriate protective clothing or equipment</li> <li>• Identify training requirements for unskilled workers working in confined spaces &amp; train the workers</li> <li>• Plan and Implement emergency procedures</li> <li>• Explain the relevant Occupational Health and safety regulations</li> </ul>	All Employees	1 day	Classroom R 935



# CPD ACCREDITED TRAINING COURSES

Training Title	Outline	Target Audience	Duration	Price (Ex VAT)
First Aid Level 1	<ul style="list-style-type: none"> <li>First aid legislative requirements</li> <li>Workplace hazards identification</li> <li>Understanding and providing cardio-pulmonary resuscitation (CPR)</li> <li>Understanding potential hazards in the work environment</li> <li>Understanding types of injuries</li> <li>Understanding the different equipment and the use thereof</li> </ul>	Emergency Preparedness Personnel	2 days	Classroom R 1400
Introduction to OHS Act, 1993 (Legal Liability)	<ul style="list-style-type: none"> <li>Legislative requirements</li> <li>Duties of employer and employees</li> <li>SHE representatives and SHE committees.</li> <li>The role of the Department of Labour (DoL)</li> </ul>	All Employees SHE representatives Supervisors	2 days	Classroom R 1450  Online R 1380
Hazard Identification and Risk Assessment (HIRA)	<ul style="list-style-type: none"> <li>Explain the legal and specified requirements for conducting continuous risk assessments</li> <li>The continuous risk assessment process is explained</li> <li>The relevant hazards and risks likely to be encountered during a specific continuous risk assessment are named</li> <li>Various physical and environmental conditions which could exist are evaluated</li> <li>Remedial action for hazards is implemented accordingly</li> <li>The consequences of non-compliance to the procedures for initiating remedial action and follow-up on continuous risk assessment are explained.</li> </ul>	General managers Middle management Supervisors Safety Officers Safety Managers	1 days	Classroom R 1250  Online R 1100
Firefighting	<ul style="list-style-type: none"> <li>General managers</li> <li>Middle management</li> <li>Supervisors</li> <li>Safety Officers</li> <li>Safety Managers</li> </ul>	All Employees	2 days	Classroom R 990
Accident and Incident Investigation	<ul style="list-style-type: none"> <li>Understand the importance of accident and incident investigation in the workplace</li> <li>Understand the legal and regulatory requirements for accident and incident investigation</li> <li>Learn the steps involved in conducting an accident or incident investigation</li> <li>Learn how to identify the root cause of an accident or incident</li> <li>Learn how to develop strategies to prevent recurrence</li> <li>Learn how to report and communicate findings</li> </ul>	Emergency preparedness personnel	2 days	Classroom R 1400  Online R 1300

# ACCREDITED TRAINING COURSES

Training Tittle	Outline	Target Audience	Duration	Price (Ex VAT)
Planned Task Observation	<ul style="list-style-type: none"> <li>• Demonstrate knowledge of how to prepare for planned tasks observation at a working place</li> <li>• Conduct planned tasks observation</li> <li>• Record and follow-up</li> </ul>	Supervisors Safety Officers Safety Managers	1 days	Classroom R 450  Online R 380
Basic Working At Heights	<ul style="list-style-type: none"> <li>• Describe the requirements to safely perform work in elevated positions</li> <li>• Describe the requirements to correctly inspect, care for and store fall arrest equipment</li> <li>• Describe the safety, health and environmental principles with regards to working platforms, ladders, scaffolds and walkways in elevated positions</li> </ul>	All Employees	1 days	Classroom R 850
Excavation Management	<ul style="list-style-type: none"> <li>• Explain the legal responsibilities for health and safety when working in or alongside excavations</li> <li>• Identify unsafe working conditions relating to excavations</li> <li>• Determine methods of achieving health and safety when working in or alongside excavations</li> <li>• Undertake responsibility for safety of self and others</li> <li>• Conduct safe work practices or procedures</li> </ul>	Supervisors Safety Officers SHE Representative	1 days	Classroom R 600  Online R 540
Work in Confined Spaces (Construction sites only)	<ul style="list-style-type: none"> <li>• Identify the hazards of working in confined spaces</li> <li>• Identify appropriate protective clothing or equipment</li> <li>• Identify training requirements for unskilled workers working in confined spaces &amp; train the workers</li> <li>• Plan and Implement emergency procedures</li> <li>• Explain the relevant Occupational Health and safety regulations</li> </ul>	All Employees	1 day	Classroom R 935

# CPD ACCREDITED TRAINING COURSES

Training Title	Outline	Target Audience	Duration	Price (Ex VAT)
First Aid Level 1	<ul style="list-style-type: none"> <li>First aid legislative requirements</li> <li>Workplace hazards identification</li> <li>Understanding and providing cardio-pulmonary resuscitation (CPR)</li> <li>Understanding potential hazards in the work environment</li> <li>Understanding types of injuries</li> <li>Understanding the different equipment and the use thereof</li> </ul>	Emergency Preparedness Personnel	2 days	Classroom R 1400
Introduction to OHS Act, 1993 (Legal Liability)	<ul style="list-style-type: none"> <li>Legislative requirements</li> <li>Duties of employer and employees</li> <li>SHE representatives and SHE committees.</li> <li>The role of the Department of Labour (DoL)</li> </ul>	All Employees SHE representatives Supervisors	2 days	Classroom R 1450  Online R 1380
Hazard Identification and Risk Assessment (HIRA)	<ul style="list-style-type: none"> <li>Explain the legal and specified requirements for conducting continuous risk assessments</li> <li>The continuous risk assessment process is explained</li> <li>The relevant hazards and risks likely to be encountered during a specific continuous risk assessment are named</li> <li>Various physical and environmental conditions which could exist are evaluated</li> <li>Remedial action for hazards is implemented accordingly</li> <li>The consequences of non-compliance to the procedures for initiating remedial action and follow-up on continuous risk assessment are explained.</li> </ul>	General managers Middle management Supervisors Safety Officers Safety Managers	1 days	Classroom R 1250  Online R 1100
Firefighting	<ul style="list-style-type: none"> <li>General managers</li> <li>Middle management</li> <li>Supervisors</li> <li>Safety Officers</li> <li>Safety Managers</li> </ul>	All Employees	2 days	Classroom R 990
Accident and Incident Investigation	<ul style="list-style-type: none"> <li>Understand the importance of accident and incident investigation in the workplace</li> <li>Understand the legal and regulatory requirements for accident and incident investigation</li> <li>Learn the steps involved in conducting an accident or incident investigation</li> <li>Learn how to identify the root cause of an accident or incident</li> <li>Learn how to develop strategies to prevent recurrence</li> <li>Learn how to report and communicate findings</li> </ul>	Emergency preparedness personnel	2 days	Classroom R 1400  Online R 1300

# PROJECT LIST

Project Name	Client	Client Details
OHS Training Services - Safety, Health & Environmental Representatives	<ul style="list-style-type: none"> <li>City of Ekurhuleni</li> </ul>	Mr. M. Mukondeleli 011 999 3348
OHS Training Services – Basic Fire Fighters	<ul style="list-style-type: none"> <li>City of Ekurhuleni</li> </ul>	Mr. M. Mukondeleli 011 999 3348
First Aid, SHE Representatives, Fire Fighters & Working at Heights	<ul style="list-style-type: none"> <li>City of Ekurhuleni</li> </ul>	Mr. M. Mukondeleli 011 999 3348
Provision of OHS Training – First Aid Level 1	<ul style="list-style-type: none"> <li>City of Ekurhuleni</li> </ul>	Mr. M. Mukondeleli 011 999 3348
Provision of General Hygiene and Hazardous Material Handling	<ul style="list-style-type: none"> <li>City of Ekurhuleni</li> </ul>	Mr. M. Mukondeleli 011 999 3348
First Aid, SHE Representatives, Fire Fighters, HIRA, Emergency Evacuation, Incident Investigation	<ul style="list-style-type: none"> <li>OBO Takusa Consulting &amp; Services</li> </ul>	Mr. K. Mensah 010 110 8724
Introduction to OHS Act No. 85 of 1993 for Managers & Supervisors, First Aid Level 1 & Basic Fire Fighting	<ul style="list-style-type: none"> <li>L &amp; S Consulting Engineers</li> </ul>	Mr. A. Gibson 079 319 5385

# CLIENTS



**L&S Consulting (Pty) Ltd**  
Structural & Civil Engineers



# CLIENT REVIEWS

“

**K Mensah**

“Professional, reliable and highly efficient. The training was delivered on time with excellence and attention to detail. We will definitely work with them again.”

Takusa Consulting & Services

“

**M Mukondelei**

“Diba BES delivered an accredited OHS skills programme with professionalism, commitment and diligence. We would gladly appoint them again.”

City of Ekurhuleni, SRAC Department

“

**A Gibson**

“Their training was thorough, engaging and highly practical. Our staff left more confident and better equipped to handle emergencies.”

Virtue ESD



# CORE SECTORS



EDUCATION



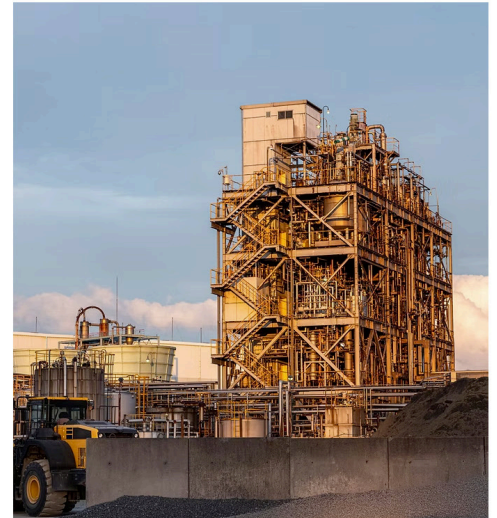
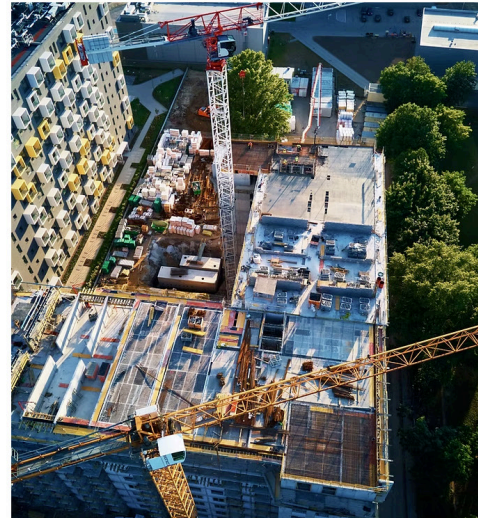
HOUSING



HEALTHCARE



OIL AND GAS



# CONTACT



## Head Office:

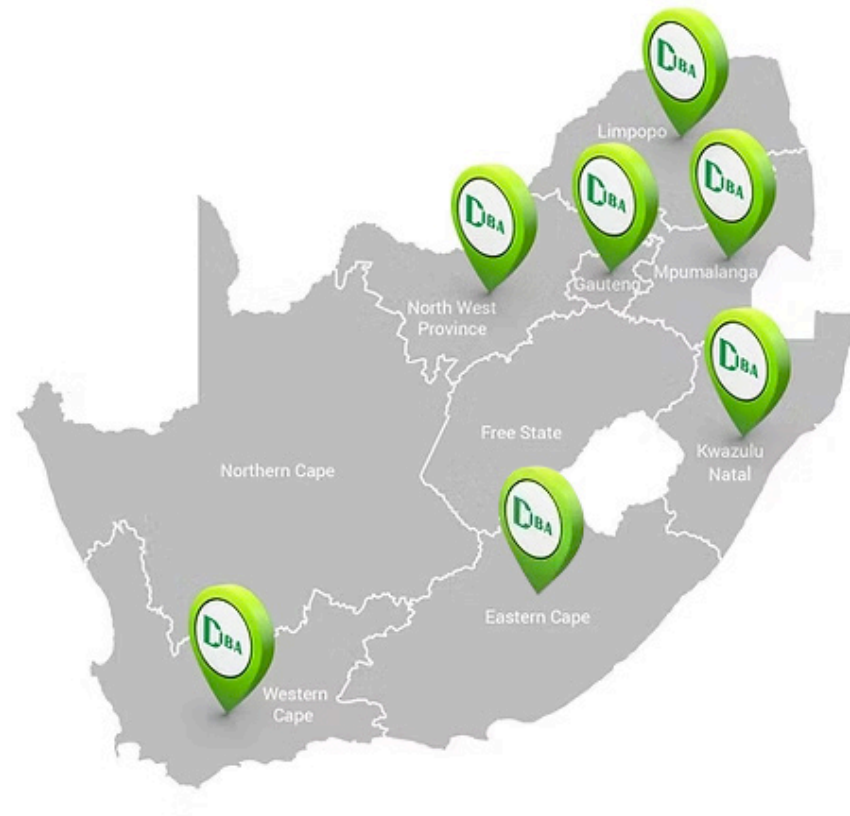
No 29 Jakkalsbessie Avenue  
Heuweloord  
Centurion  
0157



[info@diba.co.za](mailto:info@diba.co.za)



+27 (0) 12 658 0722



### Gauteng

No 29 Jakkalsbessie  
Avenue Heuweloord  
Centurion  
0157

[info@diba.co.za](mailto:info@diba.co.za)  
012 658 0722  
086 501 2160



### Limpopo

17a Magazyn Street  
Polokwane  
0700

[lp@diba.co.za](mailto:lp@diba.co.za)  
015 295 3771  
086 501 2160



### Mpumalanga

Regus Business Centre  
11 Van Der Merwe Street  
Nelspruit  
1200

[mp@diba.co.za](mailto:mp@diba.co.za)  
013 754 7756  
086 501 2160



### Kwazulu Natal

35 Braemar Street  
Lalucia  
Durban  
4153

[kzn@diba.co.za](mailto:kzn@diba.co.za)  
031 562 0078  
086 501 2160



### North West

214 Beyers Naude Dr  
Rustenburg  
0299

[nw@diba.co.za](mailto:nw@diba.co.za)  
071 773 5880  
086 501 2160



### Western Cape

20 Klipspringer Street  
Soneike  
7580

[wc@diba.co.za](mailto:wc@diba.co.za)  
072 618 5001  
086 501 2160



### Eastern Cape

Ground Floor  
14 Stewart Drive  
Berea  
5241

[info@diba.co.za](mailto:info@diba.co.za)  
072 618 5001  
086 501 2160